

SERVA Stains for 2D Gels

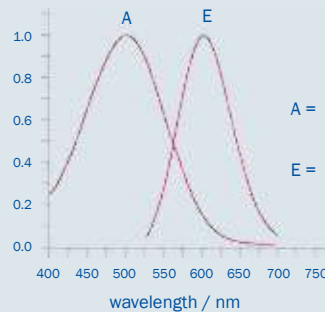
To detect separated proteins as spots in the gel proteins have to be stained, either before or after electrophoresis. There are versatile staining methods available. You may pre-label the

proteins before loading on the IPG strip or you may process the 2D gel after electrophoresis. Here is a selection of different stains available from SERVA for 2D gel staining.

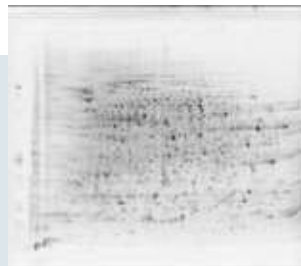
	Pre-Staining	Post Staining	Fluorescent	Silver	Coomassie
HPE™ Lightning Red	✓		✓		
SERVA Purple		✓	✓		
HPE™ Silver Staining Kit		✓		✓	
HPE™ Coomassie Staining Kit		✓			✓



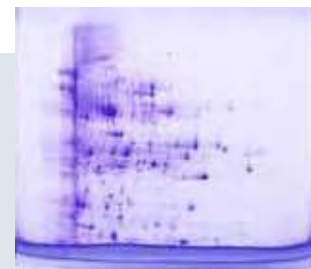
SERVAge™ TG PRIME™ 14 % 2D vertical mini gel stained with SERVA HPE™ Lightning Red



2D HPE™ Large Gel 12.5 % stained with HPE Silver Staining Kit



2D HPE™ Large Gel NF 12.5 %, stained with SERVA Purple



SERVAge™ TG PRIME™ 14 % 2D vertical mini gel stained with SERVA HPE™ Coomassie Staining Kit

Product	Size	Cat. No.
SERVA HPE™ Lightning Red	1 kit	43400.01
SERVA Purple, 250x concentrate	5 ml	43386.03
	25 ml	43386.01
SERVA Purple HiSens, 250x concentrate	5 ml	43408.01
	25 ml	43408.02
SERVA HPE™ Coomassie Staining Kit	1 kit	43396.01

Pre-labeling of protein samples with SERVA HPE™ Lightning Red allows direct spot detection without staining and washing steps after the run.