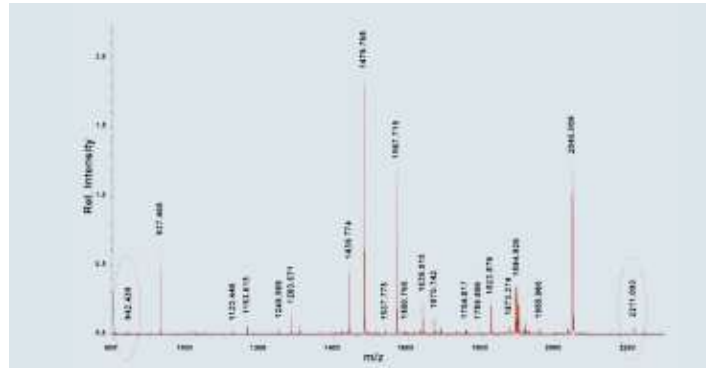


7

Endoproteinases

Trypsin MS approved is suitable for digestion of proteins for mass spectrometry analysis. Reductive methylation of the lysine residues of trypsin results in a stable product that is extremely resistant to autolytic degra-

tion. The enzyme is purified by chromatography. No chymotryptic activity is detectable. Every lot is approved for use in in-gel digestion and mass spectrometry analysis.



Spectrogram of BSA digested with Trypsin MS approved.

Lysyl Endopeptidase (LysC) is an approved quality for use with in-gel digestion, protein sequence analysis and mass spectrometric analysis. It cleaves specifically the peptide bonds at the carboxy-terminal side of Lysine residues and S-aminoethylcysteine residues

with a high degree of specificity. An added feature of Lysyl Endopeptidase is its ability to retain complete activity after incubation in 4 M urea or in 0.1 % SDS solution for up to 6 hours at 30 °C.

Product	Size	Cat. No.
Trypsin MS approved, from porcine pancreas	100 µg	37286.01
	150 µg	37286.02
	1 mg	37286.03
	4 x 25 µg	37286.04
Lysyl Endopeptidase®, MS approved	20 µg	20987.01

- Approved quality for use with in-gel digestion and mass spectrometric analysis
- High purity & specificity
- For peptide mapping and protein sequence work