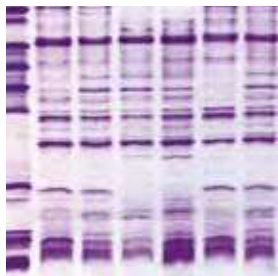


SERVA Gels for Horizontal IEF

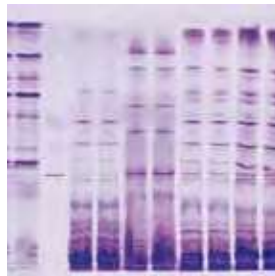
SERVALYT™ PRECOTES™ gels have a very thin gel layer featuring short separation times and staining/visualization processes. Due to the thin layer, gels only need small sample volumes to be applied. SERVALYT™ PRECOTES™ gels are recommended for a great range of QC tests in food and beverage control, species identification and tasks requiring highly sensitive detection of bands.

Gels are also available as **SERVALYT™ PreNets™** which come with a cast-in supporting fabric, ideally suited for blotting applications.

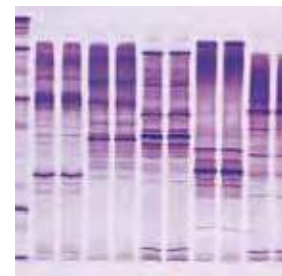
Blank PRECOTES™ gels are a superb solution to perform flatbed IEF of any pH range. These gels do not contain carrier ampholytes (“blank”), suitable for equilibration with ampholytes of choice and urea.



IEF of proteins isolated from different kinds of potato cultivars



IEF of proteins isolated from different kinds of cheese



IEF of proteins isolated from different kinds of meat

Product	Size	Cat. No.
SERVALYT™ PRECOTES™ pH 3-6, 125 mm x 125 mm x 0.15 mm	5 gels	42974.02
SERVALYT™ PRECOTES™ pH 3-6, 125 mm x 125 mm x 0.3 mm	5 gels	42874.02
SERVALYT™ PRECOTES™ pH 3-6, 245 mm x 125 mm x 0.15 mm	5 gels	42919.03
SERVALYT™ PRECOTES™ pH 3-10, 125 mm x 125 mm x 0.15 mm	5 gels	42965.03
SERVALYT™ PRECOTES™ pH 3-10, 125 mm x 125 mm x 0.3 mm	5 gels	42866.02
SERVALYT™ PRECOTES™ pH 3-10, 245 mm x 125 mm x 0.15 mm	5 gels	42967.02
SERVALYT™ PRECOTES™ pH 3-10, 245 mm x 125 mm x 0.3 mm	5 gels	42867.02
SERVALYT™ PRECOTES™ pH 4-6, 125 mm x 125 mm x 0.3 mm	5 gels	42875.02
SERVALYT™ PRECOTES™ pH 6-9, 125 mm x 125 mm x 0.15 mm	5 gels	42978.02
SERVALYT™ PRECOTES™ pH 6-9, 125 mm x 125 mm x 0.3 mm	5 gels	42878.02
SERVALYT™ PRECOTES™ CSF Kit, 245 mm x 125 mm x 0.3 mm*	1 kit	42800.01
IEF Starter Kit, 125 mm x 125 mm x 0.3 mm**	1 kit	39060.01
SERVALYT™ PreNets™ pH 3-10, 125 mm x 125 mm x 0.3 mm	5 gels	42738.02
Blank PRECOTES™, 125 mm x 125 mm x 0.3 mm	5 gels	42759.01

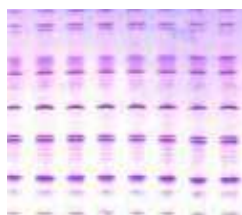
*Kit contains 5 gels, buffers, electrode wicks and applicator strips.

**Kit contains 3 gels, buffers, electrode wicks, applicator strips, cooling fluid, IEF markers and stains.

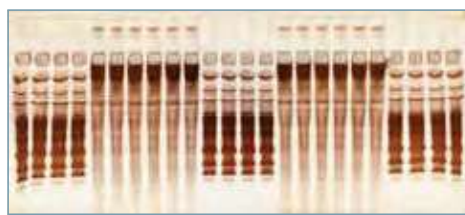
SERVA Gels for Horizontal IEF

FocusGels are offered with a gel layer of 0.65 mm which makes them less sensitive to "salt effects" than **SERVALYT™** **PRECOTES™**. Due to the high buffering capacity it is the gel of choice for all separations of salt carrying samples like serum and cerebrospinal fluid, cell and tissue extracts. One of the most important applications is the separation of oli-

goclonal bands in Multiple Sclerosis diagnostics. FocusGels contain a **SERVALYT™** cocktail designed to achieve an optimal pH gradient. Due to thickness of the layer, electrode solutions and electrode strips are not required and the electrodes are placed directly on the gel surface. FocusGels are available with 24 slots, 40 slots, or none.



SERVA IEF Gel 3-9 for PhastSystem™



FocusGel 6-11 24S

SERVAs IEF Gels 3-9 for PhastSystem™ come in package of 10 ready-to use gels.

CleanGel IEF for PhastSystem™ are gels (20 gels per package) to perform IEF at any pH range on the GE PhastSystem™. They are dried and do not contain any carrier ampholytes ("clean").

CleanGels are suitable for equilibration with ampholytes of choice and urea.

For the separation of oligoclonal bands

in Multiple Sclerosis diagnostics on the PhastSystem™, the **CSF Analysis Kit for PhastSystem™** is available. The kit contains 10 rehydratable, film-supported mini horizontal polyacrylamide gels and **SERVALYT™** carrier ampholyte mixture.

SERVAs IEF gels for PhastSystem™ are film-supported mini horizontal gels (format 50 mm x 42 mm x 0.43 mm), compatible with the GE PhastSystem™.

Product	Size	Cat. No.
FocusGel pH 3-10, 250 mm x 115 mm x 0.65 mm	5 gels	43327.01
FocusGel pH 3-10 24S, 250 mm x 115 mm x 0.65 mm	5 gels	43335.01
FocusGel pH 6-11 24S, 250 mm x 115 mm x 0.65 mm	5 gels	43329.01
FocusGel pH 3-7, 250 mm x 115 mm x 0.65 mm	5 gels	43328.01
FocusGel pH 3-7 24S, size: 250 mm x 115 mm x 0.65 mm	5 gels	43327.01
FocusGel pH 4-5 24S, size: 250 mm x 115 mm x 0.65 mm	5 gels	43332.01
FocusGel pH 4-6 24S, size: 250 mm x 115 mm x 0.65 mm	5 gels	43334.01
FocusGel pH 6-9 HEM 24S, size: 250 mm x 115 mm x 0.65 mm	5 gels	43330.01
FocusGel pH 6-11 40S, 250 mm x 115 mm x 0.65 mm	5 gels	43333.01
CSF Analysis Kit for PhastSystem™, 50 mm x 42 mm x 0.43 mm	1 kit	43393.01
CleanGel IEF for PhastSystem™, 50 mm x 42 mm x 0.43 mm	20 gels	43350.01
SERVA IEF Gel 3-9 for PhastSystem™, 50 mm x 42 mm x 0.43 mm	10 gels	43366.01
EPO Doping IEF Kit 30S, 250 mm x 115 mm x 0.65 mm	1 kit	43389.01
Blank FocusGel 24S, 250 mm x 115 mm x 0.65 mm	5 gels	43413.01

FocusGel – high buffering capacity, sample loading into slots

IEF Gel for PhastSystem™ – **SERVAs** alternative product with comparable separation patterns