

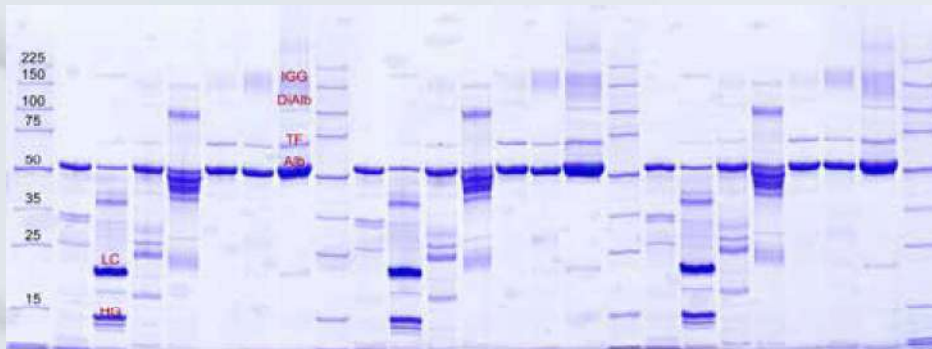
SERVA Gels for Horizontal SDS PAGE

SDS Gel Kits

SDS PAGE using flatbed (horizontal) electrophoresis units is a valuable alternative to mainly common vertical PAGE. The use of precast horizontal gels, as

supplied with the SDS Gel Kits, results in lower buffer consumption, easy handling of the gels, most efficient temperature control and superb resolution.

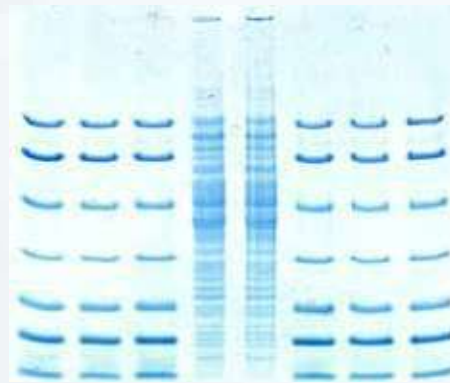
- | Gel format 250 x 125 mm, gel layer 0.43 mm
- | Complete kit with 4 gels and buffers



Urinary proteins separated on SDS Gel 10 % 25 S

SERVA SDS Gel 8-25 % Kit for PhastSystem™

For SDS PAGE in PhastGel™ format. The gel size of 50 mm x 42 mm x 0.43 mm is suitable for the horizontal, denaturing separation of proteins in the PhastSystem™. The gel matrix is cast on a carrier foil and covalently bonded to it for better handling of the gels. The complete kit contains 10 ready-to-use gels, 10 ml each of anode and cathode buffer and 20 electrode wicks.



Proteins (*E. coli* lysate, SERVA protein test mixture 6) separated on SDS Gel 8 % - 16 % for PhastSystem™.

Gel Kit	Slots	Cat. no.
SDS Gel Kit 10 %	25	43359.01
	52	43360.01
SDS Gel Kit 15 %	25	43361.01
	52	43362.01
SDS Urine Gel Kit	25	43391.01
SERVA SDS Gel 8 - 25 % Kit for PhastSystem™	-	43503.01

High resolution 1D SDS PAGE

SERVA SDS Gel Kit for PhastSystem

HPE™ BlueHorizon™ flatbed system for all gel sizes including small PhastGels™

1D SDS Excellent Gel Kits

The ready-to-use 1D SDS Excellent Gel Kits are the ideal alternative for ExcelGel™ SDS gels from GE. The gels have been developed in Heidelberg in close co-operation with researchers formerly using GE's ExcelGel ensuring comparable results.

The thin gel layer and running conditions at temperature-controlled 15 °C enables high resolution of protein bands, fast staining/destaining properties and much easier handling compared to vertical PAGE. The backing film is available as standard, but also as a non-fluorescence (NF) version. Standard film-backed gels are recommended for Coomassie® or silver staining.

The NF gels are made for fluorescence detection of proteins, e.g. SERVA Lightning Red for pre-labelling of protein samples and immediate detection of separated protein bands after electrophoresis.

Gels can be run in horizontal electrophoresis systems like SERVA's HPE™ BlueHorizon flatbed device, and as well in a Multiphor II. One kit contains 4 precast gels (260 mm x 125 mm x 0.43 mm) with 25 sample wells each, SDS anode and cathode buffer (250 ml each) and 8 electrode wicks to be soaked with anode/cathode buffer prior to electrophoresis.

- | Replaces GE's ExcelGels
- | Gel format 260 mm x 125 mm, gel layer 0.43 mm
- | 25 sample wells, 15 µl each
- | Film backing available as non-fluorescent and standard



Proteins (*E. coli* lysate, protein standards) separated on 12.5 % 1D SDS Excellent gel.

Product	Slots	Qty.	Cat. no.
Excellent Gel Kit 12.5% for 1D SDS PAGE	25	1 kit	43421.01
Excellent Gel Kit 7.5 % for 1D SDS PAGE	25	1 kit	43422.01
Excellent Gel Kit NF 12.5 % for 1D SDS PAGE	25	1 kit	43423.01
Excellent Gel Kit NF 7.5 % for 1D SDS PAGE	25	1 kit	43424.01
Excellent Gel Kit 15 % for 1D SDS PAGE	25	1 kit	43425.01
Excellent Gel Kit NF 15 % for 1D SDS PAGE	25	1 kit	43426.01

ExcelGel™: trademark owned by GE

- | High resolution horizontal SDS PAGE
- | Easy handling, low buffer consumption, long shelf life
- | For further GE gels alternatives, please contact us by e-mail (info@serva.de).