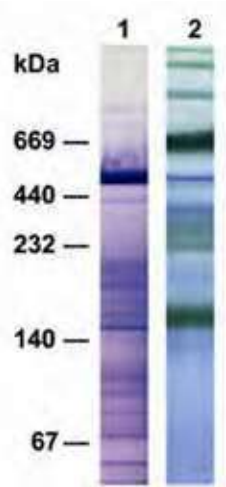


2

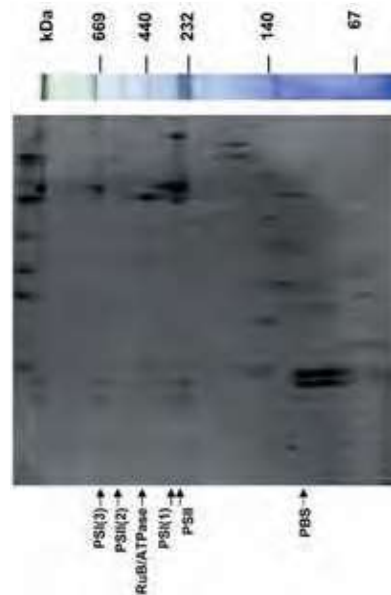
SERVA Native PAGE Gels

SERVA developed precast gels optimized for a Blue Native/Clear Native PAGE system: SERVAGel™ N for BN and CN PAGE, complemented by buffers and Blue G solution for best results.

For native PAGE in a TRIS/Glycine buffer system SERVA offers the SERVAGel™ PRiME™ gels showing highest resolution with long shelf life.



Lane 1 = Separation of stroma thylakoid membrane complexes by CN PAGE
Lane 2 = Separation of thylakoid membrane complexes by BN PAGE. By courtesy of Friedrich Ossenbuehl (University of Ulm).



Separation of thylakoid membrane complexes by 2D BN/SDS PAGE. By courtesy of Friedrich Ossenbuehl (University of Ulm).

Precast Gels for Native BN/CN PAGE	15 wells	12 wells	10 wells
SERVAGel™ N 3-12 %	43254.01	43250.01	43251.01
SERVAGel™ N 4-16 %	43255.01	43253.01	43252.01
SERVAGel™ N Native Starter Kit	-	-	43204.01
Precast TRIS/Glycine PRiME™ Gels	15 wells	12 wells	10 wells
SERVAGel™ TG PRiME™ 8 %	43284.01	43260.01	43261.01
SERVAGel™ TG PRiME™ 10 %	43285.01	43263.01	43264.01
SERVAGel™ TG PRiME™ 12 %	43286.01	43266.01	43267.01
SERVAGel™ TG PRiME™ 14 %	43287.01	43269.01	43270.01
SERVAGel™ TG PRiME™ 4-12 %	43288.01	43273.01	43274.01
SERVAGel™ TG PRiME™ 4-20 %	43289.01	43276.01	43277.01
SERVAGel™ TG PRiME™ 8-16 %	43290.01	43279.01	43280.01

Coming soon: SERVA horizontal large format gels for native PAGE.