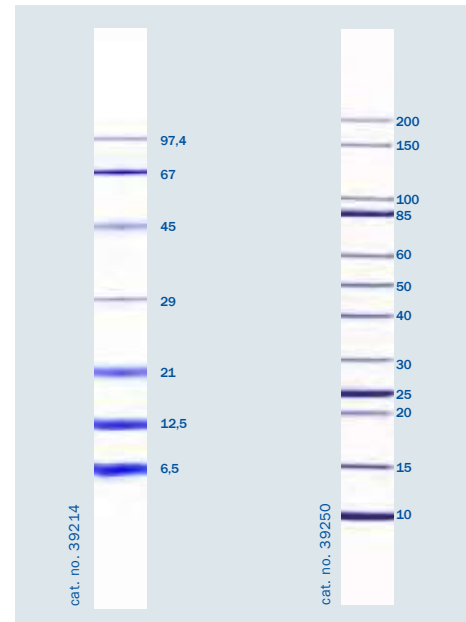


Protein Standards

For 2D electrophoresis SERVA offers different protein standards for molecular weight determination as well as a set of proteome standards for pI and molecular weight identification.

Protein Standards

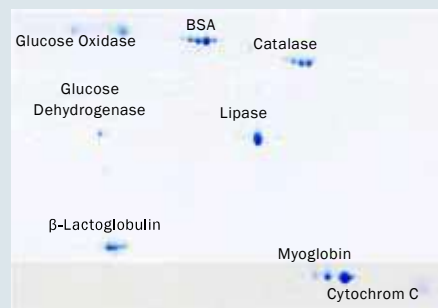
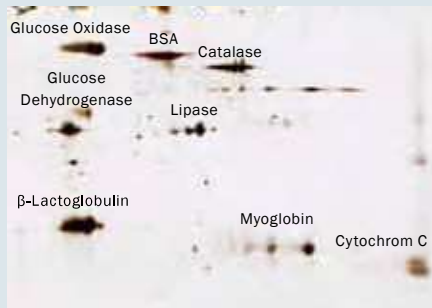
To determine the molecular weight of proteins separated by a 2D gel in the presence of SDS SERVA offers various protein markers of natural and recombinant origin. Protein markers are ready-to-use.



Proteome Standard

SERVA offers a unique set of proteome markers containing 8 proteins, spanning the entire pI region and ranging from 11.7 to 77.0 kDa. The marker proteins are characterized carefully by 2D elec-

trophoresis and also by LC/MS, identity of each protein is verified by protein sequence analysis. The kit contains 5 vials of marker proteins (lyophilized) for 5 to 10 gels in 2D electrophoresis.



Product	Size	Cat. No.
SERVA Unstained Protein Standard 6.5 - 97 kDa	500 µl	39214.01
SERVA Unstained Protein Standard IV	500 µl	39250.01
SERVA Proteome Markers	1 kit	39220.01

Protein Marker: Precise determination of molecular weight

Proteome Standard: Unique tool to calibrate 2D gels