

SDS PAGE Gels for Western Blotting

Top resolution, efficient transfer and a sensitive detection system are the most important requirements for best results in Western blotting experiments. By applying SERVAGel™ TG PRIME™ precast gels excellent separation of your protein sample will be achieved. SERVAGel™ Neutral HSE is optimized for very short running times. Use BlueVertical™ PRIME™ mini slab gel unit to run SERVAGel™ precast gels.

SERVAGel™ TG PRIME™ Precast Gels

- High resolution
- Available as homogeneous or gradient gel, with 10, 12 or 15 wells, or 2D well
- Laemmli buffer system, comparable separation patterns to standard Laemmli gels
- In stable plastic cassette (10 cm x 10 cm x 0.7 cm)
- Long shelf life (9 to 12 months, depending on acrylamide concentration)



Gel type	15 sample wells	12 sample wells	10 sample wells	2D well	Size
SERVAGel™ TG PRIME™ 8 %	43284.01	43260.01	43261.01	-	10 gels
SERVAGel™ TG PRIME™ 10 %	43285.01	43263.01	43264.01	-	10 gels
SERVAGel™ TG PRIME™ 12 %	43286.01	43266.01	43267.01	43268.01	10 gels
SERVAGel™ TG PRIME™ 14 %	43287.01	43269.01	43270.01	43271.01	10 gels
SERVAGel™ TG PRIME™ 4-12 %	43288.01	43273.01	43274.01	-	10 gels
SERVAGel™ TG PRIME™ 4-20 %	43289.01	43276.01	43277.01	-	10 gels
SERVAGel™ TG PRIME™ 8-16 %	43290.01	43279.01	43280.01	43281.01	10 gels

■ Short set-up times, gels are ready-to-use

■ Separation distance: 7 cm

SERVAGe™ Neutral HSE

- High Speed Electrophoresis (HSE) – run your gel in 20 minutes
- Best suited for tank and semi-dry blotting due to lower acrylamide concentration compared to standard Laemmli gels
- Top resolution, pattern comparable to SERVAGe™ TG PRiME™ gradient gel 4 – 20 %
- Long shelf life (15 months)

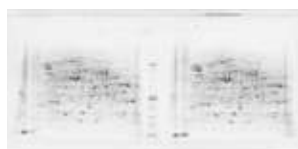
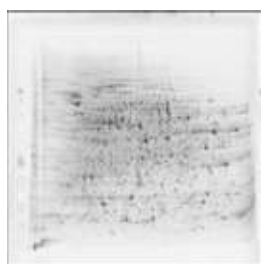
SERVAGe™ Neutral HSE



Product	Sample wells	Size	Cat. no.
SERVAGe™ Neutral HSE	10	10 gels	43246.01
SERVAGe™ Neutral HSE	12	10 gels	43245.01
SERVAGe™ Neutral HSE	15	10 gels	43249.01
SERVAGe™ Neutral HSE	2D well	10 gels	43247.01

2D HPE™ BlotGels

- Analysing target proteins by large format, horizontal 2D Western blotting
- Perform 2D WB HCP analysis or other applications requiring blotting of 2D gels
- How the transfer from 2D gel to membrane simply works:
 - A narrow edge strip is covalently bonded to the backing film
 - Most of the gel matrix adheres only non-covalent
 - Before the semi-dry blot, the covalently bound strip is simply cut off
 - Gel is ready for 2D Western Blot
- Gel size is 250 mm x 110 mm x 0.65 mm, available in three formats:
 - „Large“ for one 24 cm IPG strip
 - „Double“ for two 11 cm IPG strips
 - „Triple“ for three 7 cm IPG strips
- Best suited for semi dry blotting on BlueBlot Semi Dry Blotter SD 26 (see p. 11)



Product	Size	Cat. no.
2D HPE™ Triple BlotGel NF 12.5 % Kit	1 kit	43429.01
2D HPE™ Double BlotGel NF 12.5 % Kit	1 kit	43430.01
2D HPE™ Large BlotGel NF 12.5 % Kit	1 kit	43432.01

■ SERVAGe™ Neutral HSE gels for mini vertical gel tank and semi dry blotting

■ 2D HPE™ BlotGels for large format horizontal 2D gel semi dry blotting