

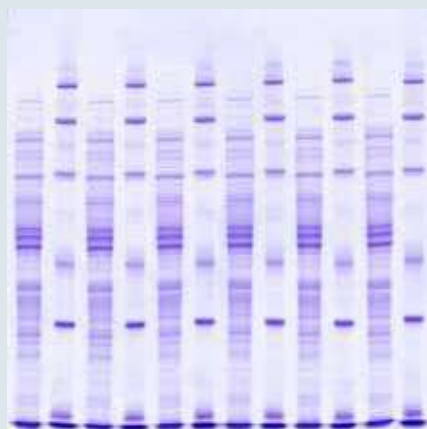
## 5

## SERVA Stains for SDS PAGE

To detect electrophoretically separated proteins, colorimetric staining methods are common. Coomassie® and silver are mainly used. The best method for a specific application strongly depends on the detection limit, the compatibility with downstream applications and detection instruments.

## Selection guide for colorimetric staining kits

	Quick Coomassie® Stain	Silver Staining Kit SDS PAGE
Type of Stain	1-step, non-toxic colloidal Coomassie® G-250 stain	Fast, MS-compatible silver stain
Pre-Staining	-	-
Post-Staining	✓	✓
Sensitivity	5 ng	0.1 ng
Staining time	15 min	45 – 60 min
Quantification	✓	-
MS compatible	✓	✓
Re-usable	✓	-
No. of mini gels stained	40 - 120	25
Cat. no.	35081.01	35076.01



SDS electrophoresis on SERVAGE™ stained with Quick Coomassie® Stain



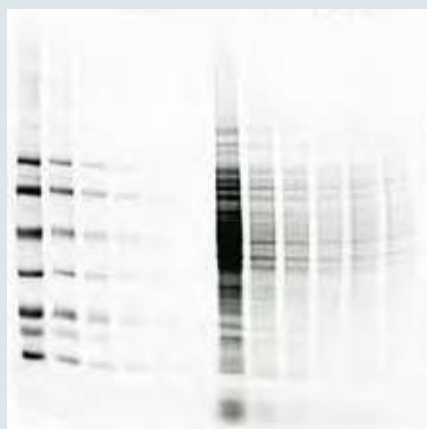
SDS electrophoresis on SERVAGE™ stained with Silver Staining Kit SDS PAGE

- Quick Coomassie® – stain your gel in 15 min only
- Silver Staining Kit – SDS PAGE - for high sensitive, MS compatible staining of SDS protein gels

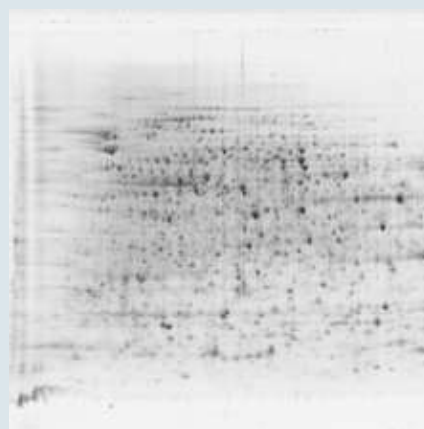
SERVA developed a range of easy-to-use, highly sensitive, fluorescence-dye based kits. The SERVA Lightning Red Kit is a rapid label of proteins prior to SDS PAGE, making any staining and washing steps unnecessary after electrophoresis.

#### Selection guide for fluorescence staining kits

	<b>SERVA PRIME™ Lightning Red</b>	<b>SERVA ProteinStain Fluo-R</b>	<b>SERVA Purple</b>	<b>SERVA Purple HiSens</b>
Type of Stain	Highly sensitive, fast, red fluorescent pre-stain	Highly sensitive red fluorescent stain	Highly sensitive, fast, red fluorescent stain	Highest sensitivity, fast, red fluorescent stain
Pre-Staining	✓	-	-	-
Post-Staining	-	✓	✓	✓
UV-Transilluminator	-	✓	-	-
Fluorescence imager/ Laser scanner	✓	✓	✓	✓
Excitation	530	473/488	405/500	405/500
Emission	610	610	610	610
Sensitivity	<0.5 ng	2 ng	0.05 ng	<20 pg
Staining time	30 min pre-staining	1 h mini gels, 6 h large gels	1 h - 1.5 h	1 h - 1.5 h
Quantification	✓	✓	✓	✓
WB/MS compatible	✓	✓	✓	✓
Quantity	1 kit	5 mg	5 ml / 25 ml	5 ml / 25 ml
Cat. no.	43402.01	35090.01	43386.03/43386.01	43408.01/43408.02



SDS electrophoresis on SERVAGe™ stained with SERVA Lightning Red



2D electrophoresis on a SERVA 2D HPE Large Gel 12.5 % flatbed gel stained with SERVA Purple